

# *MARQUES OF* ***DISTINCTION***



**2022**

**PORSCHE**



# JAN 22

wk	Mon	Tue	Wed	Thu	Fri	Sat	Sun
52						1	2
1	3	4	5	6	7	8	9
2	10	11	12	13	14	15	16
3	17	18	19	20	21	22	23
4	24/31	25	26	27	28	29	30



## PORSCHE 718 SPYDER

The Porsche 718 Spyder might look very much like a normal Porsche Boxster, and that's because this is essentially what it is. However, 718 Spyder owners get the wonderful 4.0-litre naturally aspirated flat six engine that's also found in the Cayman GT4 instead of the usual four-cylinder turbo that sounds ever so slightly disappointing. On top of that aural treat, there's sophisticated double-wishbone suspension and a limited-slip differential.

**Engine:** 3995cc flat six  
**Power:** 414bhp @ 7600rpm

**Acceleration:** 0-62mph 4.4secs  
**Top Speed:** 187mph

### DECEMBER 2021

wk	Mon	Tue	Wed	Thu	Fri	Sat	Sun
48			1	2	3	4	5
49	6	7	8	9	10	11	12
50	13	14	15	16	17	18	19
51	20	21	22	23	24	25	26
52	27	28	29	30	31		

### FEBRUARY 2022

wk	Mon	Tue	Wed	Thu	Fri	Sat	Sun
5	1	2	3	4	5	6	
6	7	8	9	10	11	12	13
7	14	15	16	17	18	19	20
8	21	22	23	24	25	26	27
9	28						

1 New Year's Day  
3 New Year's Holiday  
4 Bank Holiday (Scotland)

**MARQUES OF DISTINCTION**



**FERRARI**



# FEB 22

wk	Mon	Tue	Wed	Thu	Fri	Sat	Sun
5		1	2	3	4	5	6
6	7	8	9	10	11	12	13
7	14	15	16	17	18	19	20
8	21	22	23	24	25	26	27
9	28						



## FERRARI SF90 STRADALE

The SF90 is the first Ferrari that can be driven on purely electric power. In fact, you can cruise up to 15 miles in this plug-in hybrid – and at up to 84mph – on its three electric motors. Perfect for the daily commute, right? And if you want to be a bit more playful, then you can ask the 3.9-litre twin-turbo V8 to join the party. That brings power to almost 1000bhp for a 211mph top speed. Imagine a Prius doing that...

**Engine: 3990cc twin-turbo V8 plus triple electric motors**  
**Power: 987bhp @ 6000rpm**

**Acceleration: 0-62mph 2.5secs**  
**Top Speed: 211mph**

### JANUARY 2022

wk	Mon	Tue	Wed	Thu	Fri	Sat	Sun
52						1	2
1	3	4	5	6	7	8	9
2	10	11	12	13	14	15	16
3	17	18	19	20	21	22	23
4	24/31	25	26	27	28	29	30

### MARCH 2022

wk	Mon	Tue	Wed	Thu	Fri	Sat	Sun
9		1	2	3	4	5	6
10	7	8	9	10	11	12	13
11	14	15	16	17	18	19	20
12	21	22	23	24	25	26	27
13	28	29	30	31			

**MARQUES OF DISTINCTION**



**JAGUAR**



# MAR 22

wk	Mon	Tue	Wed	Thu	Fri	Sat	Sun
9		1	2	3	4	5	6
10	7	8	9	10	11	12	13
11	14	15	16	17	18	19	20
12	21	22	23	24	25	26	27
13	28	29	30	31			

## FEBRUARY 2022

wk	Mon	Tue	Wed	Thu	Fri	Sat	Sun
5	1	2	3	4	5	6	
6	7	8	9	10	11	12	13
7	14	15	16	17	18	19	20
8	21	22	23	24	25	26	27
9	28						

## APRIL 2022

wk	Mon	Tue	Wed	Thu	Fri	Sat	Sun
13					1	2	3
14	4	5	6	7	8	9	10
15	11	12	13	14	15	16	17
16	18	19	20	21	22	23	24
17	25	26	27	28	29	30	

1 St David's Day (Wales)  
17 St Patrick's Day (BH N Ireland & Eire)  
27 British Summertime starts



### JAGUAR F-TYPE R P575

The F-Type is the quintessential British muscle car – a curvaceous, compact coupe with a stonking great V8 shoved under the bonnet, and then supercharged for good measure. It's certainly not a politically correct motoring choice, but the sheer shove of that supercharged 5.0-litre V8 – not to mention the throaty roar from those quad exhausts – is a genuinely joyful thing in a world of near-silent Nissan Leafs and dull SUVs.

**Engine: 5000cc supercharged V8**    **Acceleration: 0-62mph 3.7secs**  
**Power: 516bhp @ 6500rpm**    **Top Speed: 186mph**



**MARQUES OF DISTINCTION**

**HONDA**



# APR 22

wk	Mon	Tue	Wed	Thu	Fri	Sat	Sun
13					1	2	3
14	4	5	6	7	8	9	10
15	11	12	13	14	15	16	17
16	18	19	20	21	22	23	24
17	25	26	27	28	29	30	



## HONDA *nsx*

Triple electric motors. Four-wheel drive. Four-wheel steering. A nine-speed dual-clutch transmission. Two turbochargers. True to Honda tradition, the latest NSX supercar most certainly does not shy away from using cutting-edge technology to fulfill its mission to take on Ferrari and Porsche at their own game. And yet it remains as approachable, usable and reliable as you'd expect any Honda to be. A true engineering marvel.

**Engine:** 3493cc twin-turbo V6 plus triple electric motors  
**Power:** 573bhp @ 6500-7500rpm  
**Acceleration:** 0-62mph 3.0secs  
**Top Speed:** 191mph

### MARCH 2022

wk	Mon	Tue	Wed	Thu	Fri	Sat	Sun
9	1	2	3	4	5	6	
10	7	8	9	10	11	12	13
11	14	15	16	17	18	19	20
12	21	22	23	24	25	26	27
13	28	29	30	31			

### MAY 2022

wk	Mon	Tue	Wed	Thu	Fri	Sat	Sun
17							1
18	2	3	4	5	6	7	8
19	9	10	11	12	13	14	15
20	16	17	18	19	20	21	22
21	23/30	24/31	25	26	27	28	29

15 Good Friday  
18 Easter Monday  
23 St George's Day (England)

**MARQUES OF DISTINCTION**





# MAY 22

wk	Mon	Tue	Wed	Thu	Fri	Sat	Sun
17							1
18	2	3	4	5	6	7	8
19	9	10	11	12	13	14	15
20	16	17	18	19	20	21	22
21	23/30	24/31	25	26	27	28	29



## FORD GT

Ford might well be the very definition of a mainstream car brand for the masses, but that doesn't mean it isn't allowed to let its hair down once in a while. And the GT is the result. Concept-car-meets-classic-racer looks, cutting-edge tech and an epic turn of speed all make the GT a legend fresh out of the box. Sure, it hasn't got the most exotic pedigree, but when something looks this good, you're just not going to care.

**Engine:** 3497cc twin-turbo V6  
**Power:** 647bhp @ 6250rpm

**Acceleration:** 0-62mph 2.8secs  
**Top Speed:** 216mph

### APRIL 2022

wk	Mon	Tue	Wed	Thu	Fri	Sat	Sun
13					1	2	3
14	4	5	6	7	8	9	10
15	11	12	13	14	15	16	17
16	18	19	20	21	22	23	24
17	25	26	27	28	29	30	

### JUNE 2022

wk	Mon	Tue	Wed	Thu	Fri	Sat	Sun
22			1	2	3	4	5
23	6	7	8	9	10	11	12
24	13	14	15	16	17	18	19
25	20	21	22	23	24	25	26
26	27	28	29	30			

2 Bank Holiday

**MARQUES OF DISTINCTION**



**LAMBORGHINI**



# JUN 22

wk	Mon	Tue	Wed	Thu	Fri	Sat	Sun
22			<b>1</b>	<b>2</b>	<b>3</b>	<b>4</b>	<b>5</b>
23	<b>6</b>	<b>7</b>	<b>8</b>	<b>9</b>	<b>10</b>	<b>11</b>	<b>12</b>
24	<b>13</b>	<b>14</b>	<b>15</b>	<b>16</b>	<b>17</b>	<b>18</b>	<b>19</b>
25	<b>20</b>	<b>21</b>	<b>22</b>	<b>23</b>	<b>24</b>	<b>25</b>	<b>26</b>
26	<b>27</b>	<b>28</b>	<b>29</b>	<b>30</b>			



## LAMBORGHINI HURACÁN EVO

There's something wonderfully theatrical about Lamborghinis and, in a world where internal combustion engines are set to be phased out, the Huracán feels almost like a last hurrah. Where its supercar rivals are adding turbochargers or hybrid power, Lamborghini continues to stick firmly to the established recipe of a big, naturally aspirated V10 engine that revs freely and sounds gorgeous, all wrapped up in a swoopy, darty coupe body. Brilliant.

**Engine: 5204cc V10**  
**Power: 631bhp @ 8000rpm**

**Acceleration: 0-62mph 2.9secs**  
**Top Speed: 202mph+**

### MAY 2022

wk	Mon	Tue	Wed	Thu	Fri	Sat	Sun
17							<b>1</b>
18	<b>2</b>	<b>3</b>	<b>4</b>	<b>5</b>	<b>6</b>	<b>7</b>	<b>8</b>
19	<b>9</b>	<b>10</b>	<b>11</b>	<b>12</b>	<b>13</b>	<b>14</b>	<b>15</b>
20	<b>16</b>	<b>17</b>	<b>18</b>	<b>19</b>	<b>20</b>	<b>21</b>	<b>22</b>
21	<b>23/30</b>	<b>24/31</b>	<b>25</b>	<b>26</b>	<b>27</b>	<b>28</b>	<b>29</b>

### JULY 2022

wk	Mon	Tue	Wed	Thu	Fri	Sat	Sun
26					<b>1</b>	<b>2</b>	<b>3</b>
27	<b>4</b>	<b>5</b>	<b>6</b>	<b>7</b>	<b>8</b>	<b>9</b>	<b>10</b>
28	<b>11</b>	<b>12</b>	<b>13</b>	<b>14</b>	<b>15</b>	<b>16</b>	<b>17</b>
29	<b>18</b>	<b>19</b>	<b>20</b>	<b>21</b>	<b>22</b>	<b>23</b>	<b>24</b>
30	<b>25</b>	<b>26</b>	<b>27</b>	<b>28</b>	<b>29</b>	<b>30</b>	<b>31</b>

2 Bank Holiday  
3 Queen's Platinum Jubilee Bank Holiday  
6 Bank Holiday (Eire)  
21 Longest Day

**MARQUES OF DISTINCTION**



**MCLAREN**



# JUL 22

wk	Mon	Tue	Wed	Thu	Fri	Sat	Sun
26					<b>1</b>	<b>2</b>	<b>3</b>
27	<b>4</b>	<b>5</b>	<b>6</b>	<b>7</b>	<b>8</b>	<b>9</b>	<b>10</b>
28	<b>11</b>	<b>12</b>	<b>13</b>	<b>14</b>	<b>15</b>	<b>16</b>	<b>17</b>
29	<b>18</b>	<b>19</b>	<b>20</b>	<b>21</b>	<b>22</b>	<b>23</b>	<b>24</b>
30	<b>25</b>	<b>26</b>	<b>27</b>	<b>28</b>	<b>29</b>	<b>30</b>	<b>31</b>



## **MCLAREN GT**

McLaren builds some truly exotic supercars, but not everybody wants the hassle of a gorgeous race car for the road if it doesn't have somewhere to put their luggage. Enter the McLaren GT. True to McLaren form, it's a sleek supercar with a carbonfibre chassis and a mid-mounted, twin-turbo V8. Except this time there's more luggage room than you'll find in some family estate cars. Which is a pretty nifty trick to pull off.

**Engine: 3994cc twin-turbo V8**  
**Power: 612bhp @ 7500rpm**

**Acceleration: 0-62mph 3.2secs**  
**Top Speed: 203mph**

### JUNE 2022

wk	Mon	Tue	Wed	Thu	Fri	Sat	Sun
22			<b>1</b>	<b>2</b>	<b>3</b>	<b>4</b>	<b>5</b>
23	<b>6</b>	<b>7</b>	<b>8</b>	<b>9</b>	<b>10</b>	<b>11</b>	<b>12</b>
24	<b>13</b>	<b>14</b>	<b>15</b>	<b>16</b>	<b>17</b>	<b>18</b>	<b>19</b>
25	<b>20</b>	<b>21</b>	<b>22</b>	<b>23</b>	<b>24</b>	<b>25</b>	<b>26</b>
26	<b>27</b>	<b>28</b>	<b>29</b>	<b>30</b>			

### AUGUST 2022

wk	Mon	Tue	Wed	Thu	Fri	Sat	Sun
31	<b>1</b>	<b>2</b>	<b>3</b>	<b>4</b>	<b>5</b>	<b>6</b>	<b>7</b>
32	<b>8</b>	<b>9</b>	<b>10</b>	<b>11</b>	<b>12</b>	<b>13</b>	<b>14</b>
33	<b>15</b>	<b>16</b>	<b>17</b>	<b>18</b>	<b>19</b>	<b>20</b>	<b>21</b>
34	<b>22</b>	<b>23</b>	<b>24</b>	<b>25</b>	<b>26</b>	<b>27</b>	<b>28</b>
35	<b>29</b>	<b>30</b>	<b>31</b>				

12 Bank Holiday (N Ireland)

**MARQUES OF DISTINCTION**







# AUG 22

wk	Mon	Tue	Wed	Thu	Fri	Sat	Sun
31	<b>1</b>	<b>2</b>	<b>3</b>	<b>4</b>	<b>5</b>	<b>6</b>	<b>7</b>
32	<b>8</b>	<b>9</b>	<b>10</b>	<b>11</b>	<b>12</b>	<b>13</b>	<b>14</b>
33	<b>15</b>	<b>16</b>	<b>17</b>	<b>18</b>	<b>19</b>	<b>20</b>	<b>21</b>
34	<b>22</b>	<b>23</b>	<b>24</b>	<b>25</b>	<b>26</b>	<b>27</b>	<b>28</b>
35	<b>29</b>	<b>30</b>	<b>31</b>				



## BMW M8 COMPETITION CONVERTIBLE

The BMW M8 Convertible is about as far from a humble 1 Series hatchback as you can get within the BMW range. Its twin-turbo V8 is capable of launching this big Beemer to 62mph from a standstill in just 3.3 seconds. And if you go for the optional M Driver package you can lift the top speed from a limited 155mph to 189mph. Which is almost certainly a fair bit faster than your rear-seat passengers will be comfortable with...

**Engine: 4395cc twin-turbo V8**  
**Power: 617bhp @ 6000rpm**

**Acceleration: 0-62mph 3.3secs**  
**Top Speed: 189mph**

### JULY 2022

wk	Mon	Tue	Wed	Thu	Fri	Sat	Sun
26					<b>1</b>	<b>2</b>	<b>3</b>
27	<b>4</b>	<b>5</b>	<b>6</b>	<b>7</b>	<b>8</b>	<b>9</b>	<b>10</b>
28	<b>11</b>	<b>12</b>	<b>13</b>	<b>14</b>	<b>15</b>	<b>16</b>	<b>17</b>
29	<b>18</b>	<b>19</b>	<b>20</b>	<b>21</b>	<b>22</b>	<b>23</b>	<b>24</b>
30	<b>25</b>	<b>26</b>	<b>27</b>	<b>28</b>	<b>29</b>	<b>30</b>	<b>31</b>

### SEPTEMBER 2022

wk	Mon	Tue	Wed	Thu	Fri	Sat	Sun
35				<b>1</b>	<b>2</b>	<b>3</b>	<b>4</b>
36	<b>5</b>	<b>6</b>	<b>7</b>	<b>8</b>	<b>9</b>	<b>10</b>	<b>11</b>
37	<b>12</b>	<b>13</b>	<b>14</b>	<b>15</b>	<b>16</b>	<b>17</b>	<b>18</b>
38	<b>19</b>	<b>20</b>	<b>21</b>	<b>22</b>	<b>23</b>	<b>24</b>	<b>25</b>
39	<b>26</b>	<b>27</b>	<b>28</b>	<b>29</b>	<b>30</b>		

1 Bank Holiday (Scotland & Eire)  
29 Bank Holiday (Excl Scotland)

**MARQUES OF DISTINCTION**



**ASTON MARTIN**



# SEP 22

wk	Mon	Tue	Wed	Thu	Fri	Sat	Sun
35				1	2	3	4
36	5	6	7	8	9	10	11
37	12	13	14	15	16	17	18
38	19	20	21	22	23	24	25
39	26	27	28	29	30		



## ASTON MARTIN VANTAGE V600

Simplicity is at the heart of the Aston Martin Vantage V600: an enormous V12, an old-fashioned manual gearbox (albeit with seven speeds) and beefy hot-rod looks. The model is a nod to the supercharged V600 from the 1990s and was actually commissioned by a private customer. It's a rarity, too. Built by Aston Martin's 'Q' personalisation service, there are just 14 examples of the V600 in existence – seven coupes and seven roadsters.

**Engine:** 5935cc V12  
**Power:** 591bhp @ 6750rpm

**Acceleration:** 0-62mph 4.0secs  
**Top Speed:** 195mph

### AUGUST 2022

wk	Mon	Tue	Wed	Thu	Fri	Sat	Sun
31	1	2	3	4	5	6	7
32	8	9	10	11	12	13	14
33	15	16	17	18	19	20	21
34	22	23	24	25	26	27	28
35	29	30	31				

### OCTOBER 2022

wk	Mon	Tue	Wed	Thu	Fri	Sat	Sun
39						1	2
40	3	4	5	6	7	8	9
41	10	11	12	13	14	15	16
42	17	18	19	20	21	22	23
43	24/31	25	26	27	28	29	30

**MARQUES OF DISTINCTION**



**BENTLEY**



# OCT 22

wk	Mon	Tue	Wed	Thu	Fri	Sat	Sun
39						1	2
40	3	4	5	6	7	8	9
41	10	11	12	13	14	15	16
42	17	18	19	20	21	22	23
43	24/31	25	26	27	28	29	30



## **BENTLEY CONTINENTAL GTC**

Imagine it: cruising along the seafront in Nice or Monaco, top down, Ray-Bans glinting in the Mediterranean sun. That's what cars like the Bentley Continental GTC are made for — it's the perfect luxury cruiser. It's all the more amazing, then, that its huge turbocharged engine can haul this big soft-top along at more than 200mph, should the mood take you (and you can find a long enough piece of tarmac with no speed limit...).

**Engine: 5950cc twin-turbo W12    Acceleration: 0-62mph 3.8secs**  
**Power: 626bhp @ 6000rpm    Top Speed: 207mph**

### SEPTEMBER 2022

wk	Mon	Tue	Wed	Thu	Fri	Sat	Sun
35				1	2	3	4
36	5	6	7	8	9	10	11
37	12	13	14	15	16	17	18
38	19	20	21	22	23	24	25
39	26	27	28	29	30		

### NOVEMBER 2022

wk	Mon	Tue	Wed	Thu	Fri	Sat	Sun
44	1	2	3	4	5	6	
45	7	8	9	10	11	12	13
46	14	15	16	17	18	19	20
47	21	22	23	24	25	26	27
48	28	29	30				

30 British Summertime ends  
31 Bank Holiday (Eire)

**MARQUES OF DISTINCTION**



**ALPINE**



# NOV 22

wk	Mon	Tue	Wed	Thu	Fri	Sat	Sun
44		1	2	3	4	5	6
45	7	8	9	10	11	12	13
46	14	15	16	17	18	19	20
47	21	22	23	24	25	26	27
48	28	29	30				

## OCTOBER 2022

wk	Mon	Tue	Wed	Thu	Fri	Sat	Sun
39						1	2
40	3	4	5	6	7	8	9
41	10	11	12	13	14	15	16
42	17	18	19	20	21	22	23
43	24/31	25	26	27	28	29	30

## DECEMBER 2022

wk	Mon	Tue	Wed	Thu	Fri	Sat	Sun
48				1	2	3	4
49	5	6	7	8	9	10	11
50	12	13	14	15	16	17	18
51	19	20	21	22	23	24	25
52	26	27	28	29	30	31	

30 St Andrew's Day (Scotland)

**MARQUES OF DISTINCTION**



### ALPINE A110 S

With looks that echo the lines of the classic Alpine rally cars from the 1960s, but with 21st-century running gear, the A110 is an intoxicating mix of nostalgia and modern technology. The result is a beguilingly agile and pretty little sports car that's bound to put a smile on the face of a driver every time they point it at an empty, twisty country road. And which can give far more expensive machinery a run for its money.

**Engine:** 1798cc turbocharged 4cyl **Acceleration:** 0-62mph 4.5secs  
**Power:** 300bhp @ 6295rpm **Top Speed:** 155mph





# DEC 22

wk	Mon	Tue	Wed	Thu	Fri	Sat	Sun
48				1	2	3	4
49	5	6	7	8	9	10	11
50	12	13	14	15	16	17	18
51	19	20	21	22	23	24	25
52	26	27	28	29	30	31	



## JANNERALLY DESIGN-1

The Jannerally Design-1 might look like a refugee from a comic book about 1960s racing cars, but this quirky little machine is all real. Under the bonnet is a burly 3.5-litre V6 from Nissan. Powering a car that's shorter than a Mazda MX-5 and which weighs just 850kg, this 320bhp engine packs quite a punch — enough to see it to 62mph from a standing start in just under four seconds. If you're after no-frills old-school thrills, this is very much the car for you.

**Engine: 3498cc V6**  
**Power: 320bhp @ 6300rpm**

**Acceleration: 0-62mph 3.9secs**  
**Top Speed: 135mph**

### NOVEMBER 2022

wk	Mon	Tue	Wed	Thu	Fri	Sat	Sun
44	1	2	3	4	5	6	
45	7	8	9	10	11	12	13
46	14	15	16	17	18	19	20
47	21	22	23	24	25	26	27
48	28	29	30				

### JANUARY 2023

wk	Mon	Tue	Wed	Thu	Fri	Sat	Sun
52							1
1	2	3	4	5	6	7	8
2	9	10	11	12	13	14	15
3	16	17	18	19	20	21	22
4	23/30	24/31	25	26	27	28	29

21 Shortest Day  
25 Christmas Day  
26 Boxing Day  
27 Bank Holiday





CALENDAR FOR 2022

JANUARY							FEBRUARY							MARCH							APRIL							MAY							JUNE																																									
S	M	Tu	W	Th	F	S	S	M	Tu	W	Th	F	S	S	M	Tu	W	Th	F	S	S	M	Tu	W	Th	F	S	S	M	Tu	W	Th	F	S	S	M	Tu	W	Th	F	S																																			
30	31				1				1	2	3	4	5	6	7	8	9	10	11	12	13	14	15	16	17	18	19	20	21	22	23	24	25	26	27	28						1	2	3	4	5	6	7	8	9	10	11	12	13	14	15	16	17	18	19	20	21	22	23	24	25	26	27	28	29	30	31				

Bank Holidays: January 3rd, January 4th (Scotland), March 17th (N.I./Eire), April 15th (Good Friday), April 18th, May 2nd, May 30th, June 6th (Eire), July 12th (N.I. Only), August 1st (Scotland/Eire), August 29th (Excl Scotland), October 30th (Eire), December 26th, December 27th

2022 NOTABLE DATES

New Year's Day	Jan 1st
BANK HOLIDAY	Jan 3rd
BANK HOLIDAY (Scotland)	Jan 4th
Epiphany	Jan 6th
Burns Night (Scotland)	Jan 25th
Chinese New Year	Feb 1st
Accession of Queen Elizabeth II	Feb 6th
Septuagesima Sunday	Feb 13th
St. Valentine's Day	Feb 14th
Quinquagesima Sunday	Feb 27th
Maha Shivaratri (Hindu)	Feb 28th
Isra and Mi'raj (Muslim)	Feb 28th
St. David (Wales)	Mar 1st
Shrove Tuesday	Mar 1st
Ash Wednesday	Mar 2nd
Quadragesima Sunday	Mar 6th
Commonwealth Day	Mar 14th
St. Patrick (Ireland)	Mar 17th
Bank Holiday (N. Ireland/Eire)	Mar 17th
Holi (Hindu)	Mar 18th
Annunciation (Lady Day)	Mar 25th
Mothering Sunday	Mar 27th
British Summertime commences	Mar 27th
First Day of Ramadan (Muslim)	Apr 3rd
Palm Sunday	Apr 10th
GOOD FRIDAY	Apr 15th
Passover (Jewish) 1st day of	Apr 16th
Easter Day	Apr 17th
BANK HOLIDAY (Easter Monday - Excl. Scotland)	Apr 18th
H.M. The Queen's Birthday	Apr 21st
St. George (England)	Apr 23rd
Low Sunday	Apr 24th
Laylat al-Qadr – Night of Destiny (Muslim)	Apr 28th
BANK HOLIDAY	May 2nd
Eid al-Fitr (Muslim)	May 2nd
Liberation Day (Jersey/Guernsey)	May 9th
Rogation Sunday	May 22nd
Ascension Day	May 26th
BANK HOLIDAY	May 30th
Coronation Day	June 2nd
Feast of Weeks (Jewish)	June 5th
Whit Sunday	June 5th
Bank Holiday (Eire)	June 6th
Prince Philip, Duke of Edinburgh's Birthday	June 10th
H.M. The Queen's Official Birthday*	June 11th
Trinity Sunday	June 12th
Corpus Christi	June 16th
Father's Day	June 19th
Longest Day	June 21st
Midsummer Day	June 25th
Eid-al-Adha (Muslim)	July 9th
Bank Holiday (N. Ireland)	July 12th
Al-Hijra/Muharram (Muslim)	July 30th
Islamic New Year (1444)	July 30th
Bank Holiday (Eire & Scotland)	Aug 1st
Raksha Bandhan (Hindu)	Aug 11th
Janmashtami (Hindu)	Aug 18th
BANK HOLIDAY (Excl. Scotland)	Aug 29th
Ganesh Chaturthi (Hindu)	Aug 30th
Jewish New Year (5783)	Sept 26th
Navaratri (Hindu)	Sept 26th
Michaelmas Day	Sept 29th
Dussehra (Hindu)	Oct 4th
Day of Atonement (Jewish)	Oct 5th
Prophet's Birthday (Muslim)	Oct 8th
Tabernacles (Jewish) 1st day of	Oct 10th
Trafalgar Day	Oct 21st
British Summertime ends*	Oct 30th
Bank Holiday (Eire)	Oct 31st
Hallowe'en	Oct 31st
Guy Fawkes	Nov 5th
Remembrance Sunday	Nov 13th
Birthday of the H.R.H. Prince of Wales	Nov 14th
1st Sunday in Advent	Nov 27th
St. Andrew (Scotland)	Nov 30th
Shortest Day	Dec 21st
CHRISTMAS DAY	Dec 25th
BOXING DAY	Dec 26th
BANK HOLIDAY	Dec 27th

\* Dates correct at time of going to press.

Reproduced, with permission, from Crown Copyright data supplied by H.M. Nautical Almanac Office at the U.K. Hydrographic Office.

MOON'S PHASES 2022

JANUARY		APRIL		JULY		OCTOBER	
New Moon	2nd	New Moon	1st	First Quarter	7th	First Quarter	3rd
First Quarter	9th	First Quarter	9th	Full Moon	13th	Full Moon	9th
Full Moon	17th	Full Moon	16th	Last Quarter	20th	Last Quarter	17th
Last Quarter	25th	Last Quarter	23rd	New Moon	28th	New Moon	25th

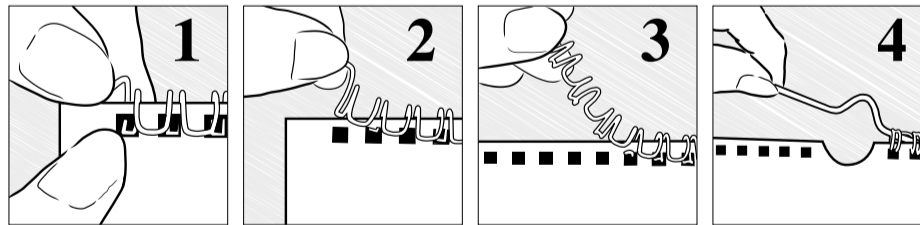
FEBRUARY		MAY		AUGUST		NOVEMBER	
New Moon	1st	First Quarter	9th	First Quarter	5th	First Quarter	1st
First Quarter	8th	Full Moon	16th	Full Moon	12th	Full Moon	8th
Full Moon	16th	Last Quarter	22nd	Last Quarter	19th	Last Quarter	16th
Last Quarter	23th	New Moon	30th	New Moon	27th	New Moon	23rd

JANUARY		FEBRUARY		MARCH		APRIL		MAY		JUNE	
2nd	16.03	6th	16.59	6th	17.50	3rd	19.37	1st	20.24	5th	21.12
9th	16.12	13th	17.12	13th	18.02	10th	19.49	8th	20.35	12th	21.18
16th	16.22	20th	17.25	20th	18.14	17th	20.01	15th	20.46	19th	21.21
23rd	16.34	27th	17.37	27th	19.25	24th	20.12	22nd	20.56	26th	21.22
30th	16.46							29th	21.05		

JANUARY		FEBRUARY		MARCH		APRIL		MAY		JUNE	
31	1	1	2	1	2	30	1	30	1	30	1
3	4	7	8	7	8	4	5	2	3	6	7
10	11	14	15	14	15	11	12	9	10	13	14
17	18	21	22	18	19	18	19	16	17	20	21
24	25	28	29	25	26	25	26	23	24	27	28

Calendar Recycling

Remove the steel wire binding and recycle as such if you have the facilities. The calendar leaves and postal carton should be recycled as paper.



- 1 Locate end of wire where loops join
- 2-3 Hold firmly and pull away from calendar
- 4 Remove hanger and repeat for other side

Caution: End of wire can be sharp please take care. Pull away from eyes.